

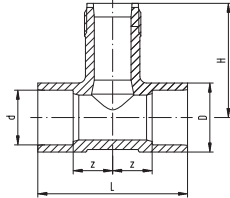
Installation Fittings

ABS Installation Fittings

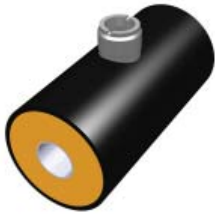


Code	DN	d	L	H	Z	D	Sensor Type
729 310 007	DN20	25	100	78	32	35	Flow -X0, pH -XX
729 310 008	DN25	32	110	81	33	44	Flow -X0, pH -XX
729 310 009	DN32	40	110	85	29	51	Flow -X0, pH- XX
729 310 010	DN40	50	120	89	29	63	Flow -X0, pH -XX
729 310 011	DN50	63	130	95	28	78	Flow -X0, pH -XX

- For use with P51530-X0, 3-2536-X0, 3-8510-X0, 3-8512-X0, 3-2537-XC-X0, 3-2551-X0-XX, 3-272X-XX
- Please contact your local Georg Fischer sales office for availability.



COOL-FIT® Installation Fittings



Code	DN	d	L	H	Z	D
738 310 107	DN20	25	220	78	110	90
738 310 108	DN25	32	220	81	110	90
738 310 109	DN32	40	220	85	110	110
738 310 110	DN40	50	220	89	110	110
738 310 111	DN50	63	220	95	110	125

- For use only with Georg Fischer COOL-FIT® systems and with Signet 515 or 2536 Flow Sensors
- Please contact your local Georg Fischer sales office for availability.

